



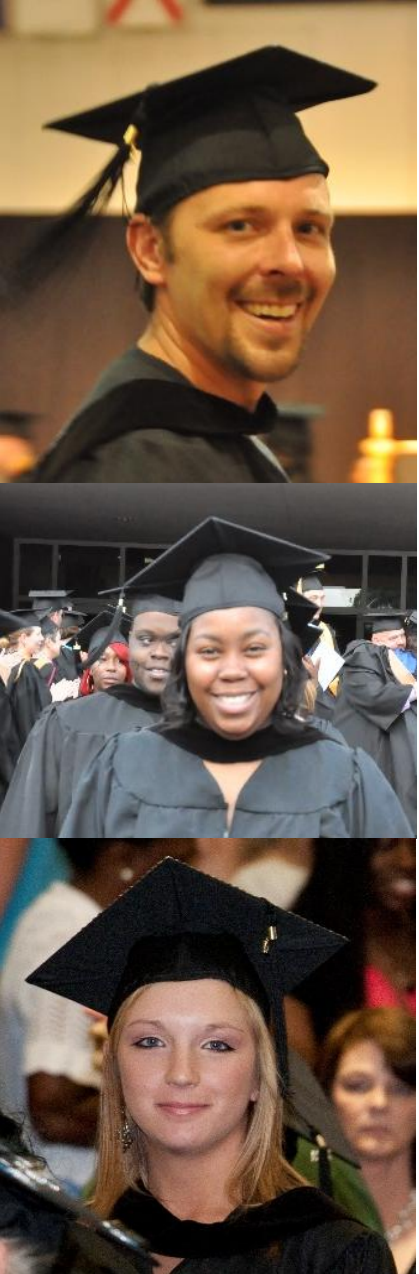
Technical College of the Lowcountry
Dr. Richard J. Gough, President

TCL Projects: Capital Sales Tax Commission

1. Health Sciences Expansion: Moor Hall Renovation & Building 6 Restoration
 - \$2.5 million dollar funding request
2. TCL Culinary Arts Teaching Institute
 - \$11.60 million dollar funding request

Project(s) Parameters

- Be ***realistic and achievable*** capital infrastructure need
- Have ***other sources of funding*** as well ***completed planning and engineering***
- Sized to allow ***completion in a reasonable time***
- Post development ***operations and maintenance costs budgeted and funded*** at completion
- Must ***not compete with private development***
- Must be ***physical in nature***



TCL's Value to Beaufort County

- College serves approximately 5,000 student citizens annually
- Employs more than 300 faculty and staff
- Offers more than 90 academic programs most with placements rates over 90%, many almost 100%
- Produces the most annual # of graduates than any other local institution of higher education
- More than 93% of TCL graduates either go on to 4-year institutions or move directly into jobs in Beaufort County and the Lowcountry

Project #1: Health Sciences Expansion - Moor Hall Renovation & Building 6 Restoration

- **Project Scope**
 - Interior renovation of Moor Hall and restoration of academic space in Building 6 on TCL's Beaufort Campus
- **County/Public Benefit**
 - Primary benefit: Empowers TCL to respond to the workforce demand of the County's third largest employment industry – Health Care.
 - Secondary benefit: Restores local historical building and makes available historical space for community use.
- **Cost**
 - \$2.5 Million
- **Additional Funding Sources**
 - Private donations
 - Operations and maintenance costs will be absorbed by the College's operations budget.

Health Care Industry in Beaufort County

- Number 3 employment industry in Beaufort County. (Number 1 is Accommodation and Food Services and number 2 is Retail Trade.)¹
- Industry with the County's highest labor market projection with a workforce demand of almost 2,000 new health care jobs by 2022.¹
- Medical Assisting is one of the fastest-growing occupations in the Lowcountry, a program TCL is offering for the first time for the 2016 Fall term.
- TCL health sciences programs are best-in-class with almost 100% placement rates with graduates at Beaufort Memorial Hospital, Hilton Head Hospital and Coastal Carolina.

¹ *An Analysis of Workforce Supply and Demand in Beaufort County, SC*, commissioned by the Beaufort Chamber of Commerce, Dec. 2014.

Moor Hall Renovation and Building 6 Restoration

- Constructed in 1939, Moor Hall is currently uninhabitable.
- Relocating administrative offices from Building 6 to a habitable Moor Hall will restore almost 10,000 sq. ft. of academic space in Building 6. (Moor Hall is not suitable for use as academic space.)
- Interior renovation of Moor Hall will make available 9,000 sq. ft. of administrative space. Plans include space suitable for small community receptions or meetings.
- Moor Hall has historical significance to the community. It is one of the last remaining buildings from the Mather Junior College.



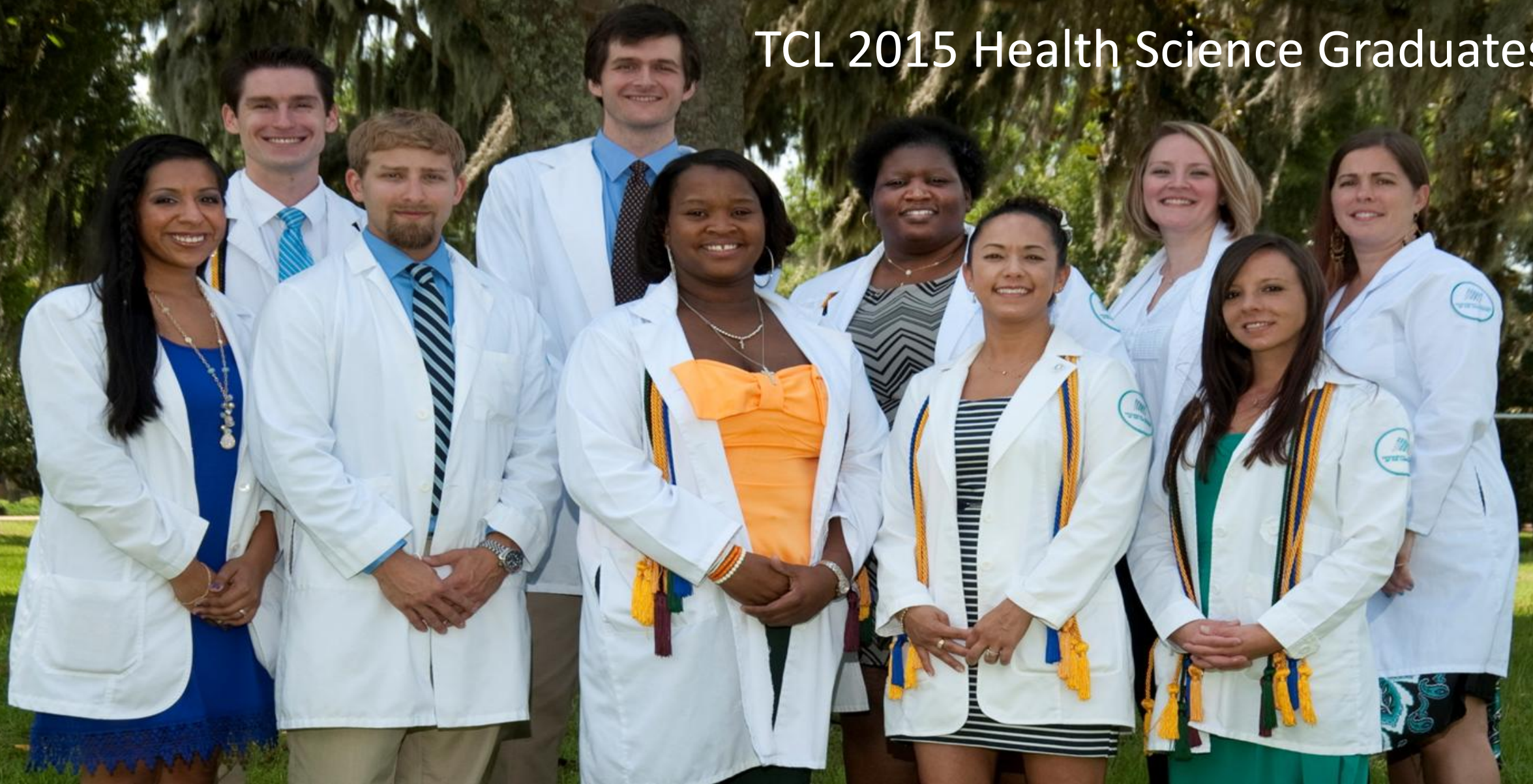


Moor Hall first floor renovation



Moor Hall second floor renovation

TCL 2015 Health Science Graduates



Project #2: TCL Culinary Arts Teaching Institute

- Project Scope
 - 26,000 sq. ft. free standing culinary arts teaching institute at TCL's New River Campus
- County/Public Benefit
 - Strengthens the number one economic driver in Beaufort County, the travel and tourism industry, by providing a skilled culinary workforce that will enable industry growth and enhance regional culinary acclaim.
- Cost
 - \$11.60 Million
- Additional Funding Sources
 - Private and industry donations
 - Industry in-kind donations
 - Operations and maintenance costs will be covered by tuition and fees

Travel and Tourism Industry in Beaufort County

- In 2014 Beaufort County posted more than \$1.0 billion dollars in domestic traveler expenditures, about a 5.0% increase over 2013. Travel and tourism expenditures supported \$221. million in payroll and 13,000 County jobs.¹
- The food services industry accounted for almost 30% of those dollars (\$360 million) and more than 50% of the jobs - 6,700 County jobs.
- Lodging accounted for almost 27% of the dollars (\$324 million) and almost 19% of the jobs – 2,400 County jobs.

¹ A Study Prepared for the South Carolina Department of Parks, Recreation & Tourism by the U.S. Travel Association, July 2015.

Workforce Analysis

A workforce analysis commissioned by the Beaufort County Chamber of Commerce indicates workforce supply will not keep up with the workforce demands of the County's Hospitality and Tourism industry.¹

Cluster	Supply (Degrees)	Long-term Demand (Job projections thru 2020)	Difference
Hospitality and Tourism ²	3.6%	14.4%	(-10.5%)³

¹ *An Analysis of Workforce Supply and Demand in Beaufort County, SC*, prepared by the South Carolina Department of Employment & Workforce, Dec. 2015.

² Most growth in restaurants and cooks.

³ Negative number means there is not enough supply to keep up with employer demand.

Critical Workforce Need

Local initiatives such as Santa Elena and FirstShore.org will **drive more visitors** to the County and stimulate additional industry growth not accounted for in current projections.

“...we all agree that there is an ever growing (CRITICAL) need for trained entry and middle level culinarians in the Bluffton-HHI area...”

Jeff Kruse, Vice President for Food and Beverage

The Sea Pines Resort

Beaufort County Ranks Third

- The County's travel and tourism industry ranks third in the State behind Horry County and Charleston County.
- These counties have culinary institutes serving this economically vital industry:
 - *The International Culinary Institute of Myrtle Beach at Horry Georgetown Technical College*
 - *The Culinary Institute of Charleston at Trident Technical College*

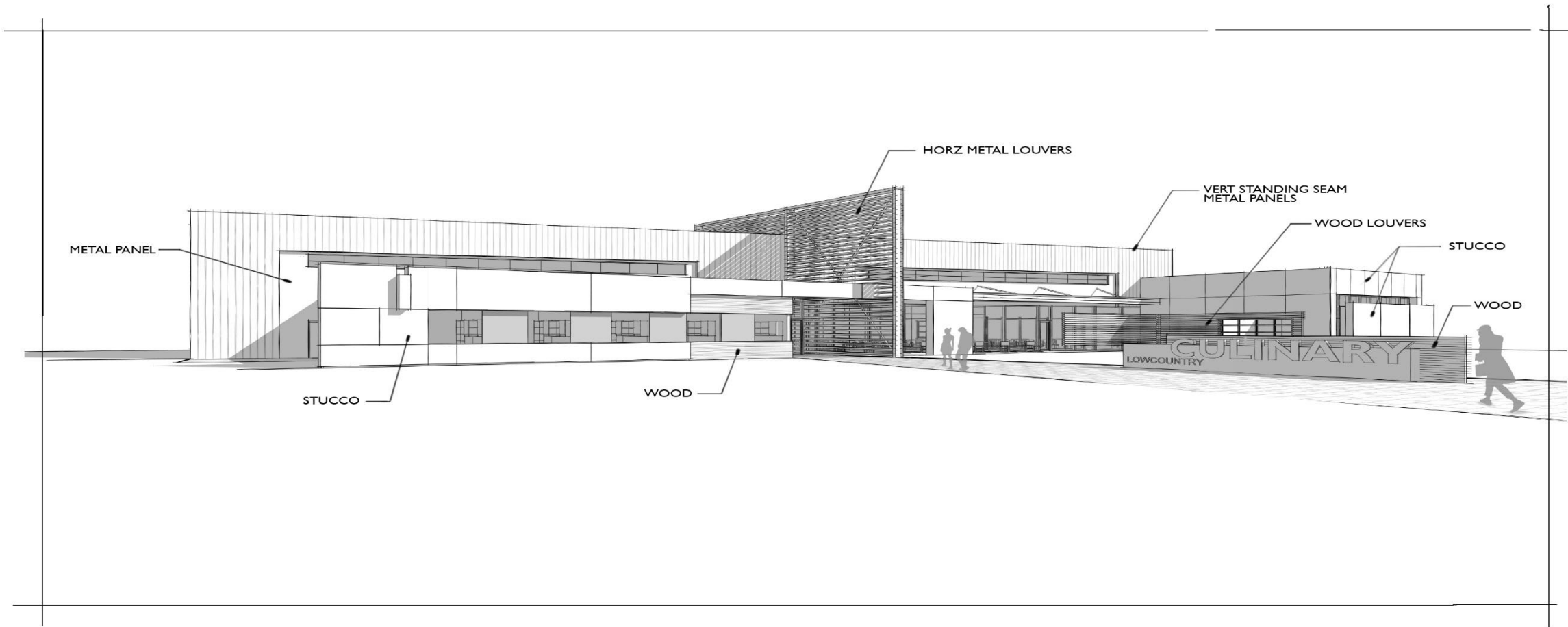


Seafood class at the International Culinary Institute of Myrtle Beach

TCL Culinary Arts Teaching Institute

- 26,000 sq. ft. state-of-the-art culinary institute to be built on the College's New River Campus
- Completion by 2019, plans include teaching kitchens, academic classrooms, demonstration kitchen and community kitchen
- The Institute will offer associate degrees and certification programs such as
 - Culinary Arts Technology with specializations in:
 - Baking and Pastry
 - Local Seafood
 - Health and Nutrition
 - Culinary Management
 - Farm to Table





METAL PANEL

STUCCO

WOOD

HORZ METAL LOUVERS

VERT STANDING SEAM
METAL PANELS

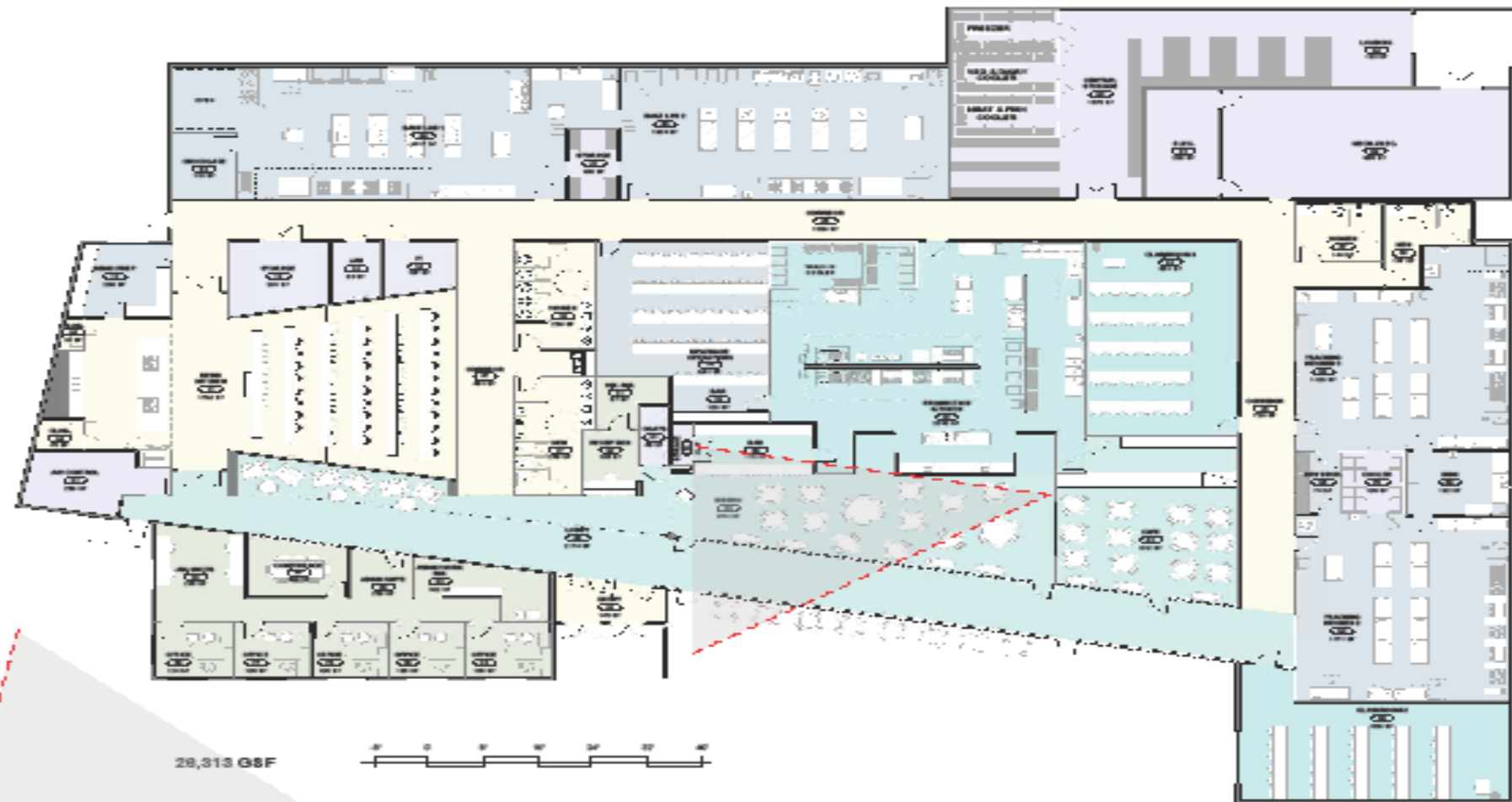
WOOD LOUVERS

STUCCO

WOOD

LOWCOUNTRY

CULINARY



28,313 GSF



TECHNICAL COLLEGE OF THE LOWCOUNTRY
CULINARY TEACHING FACILITY CONCEPT DESIGN



FLOOR PLAN
 2.29.16

